



TETRA
INDUSTRIES

ARTHROSCOPY POWER PRODUCTS



CATALOG



**Spectrum AutoPass
Suture Passer**



Suture Passer



Medium Crescent Hook



45° Right Hook



45° Left Hook

Suture Passer

- » Consistent performance in thick tissue
- » Two suture passers in one
- » All-inside suture passing eliminates a step
- » 18mm bite, Fits down 5.5mm cannula
- » Updated needle with optimized piercing tip, strong PEEK tab, and polymer coating for smooth actuation
- » Stiff shaft for durability
- » Anatomic depth markings on jaw in 5mm increments

Cat. No.

Spectrum AutoPass Suture Passer (Reusable) SMI-02AP

Spectrum AutoPass Needle* (5/Box - Disposable) SMI-02N

* Spectrum AutoPass Needle is not compatible with Concept Suture Passer

Suture Passer The Seahawk Suture Passers are available in four tip configurations – two for labral repair and two for rotator cuff.

- » Designed for arthroscopic or open suturing of soft tissue
- » Unique “Single-pass” instrument
- » Pass and retrieve with one device
- » Designed to work with #2 sutures

Seahawk Suture Passer (left, up)GU2000

Seahawk Suture Passer (right, up)GU2001

Seahawk RC Suture Passer (left, down)GU2002

Seahawk RC Suture Passer (right, down)GU2003

Suture Passer

- » Allows suture to be passed in soft tissue repair procedures
- » Can be used in conjunction with Spectrum® I and II, hollow needles and punches
- » 3 High strength eyelets
- » Low profile pass

Cat. No.

Super Shuttle Suture Passer (Sterile, 8/Box)C6005

Spectrum® II Accessories

Loop Handle Knot Pusher.....	C6112
Crochet Hook	C6105
Grasping Forceps, 3.4mm dia., Straight w/Ratchet	11.1001
Suture Retrieval Forceps, 3.4mm dia.	16.1018
Katana® High-strength Suture Cutter	GU1009
Micro-Scissors, 2.75mm dia., Straight	2.10011
Suture Scissor, 3.5mm dia., Straight (For Braided Polyester, High Strength or Monofilament Suture)	GU1005
Liberator™ Knife	25.50014
Rasp Liberator Knife II	25.50016
Rasp, 30 degree, Top and Bottom Serrations.....	C8537.1
Mini-Probe, 3.5mm dia., Straight	21.1001
Suture Saver™ Kit (5/Box)	C6180
Switching Stick, 254mm x 3.2mm (2/Box)	2220

Original Spectrum Instruments

Suture Hook Handle	27.00011
Mini-Probe, 3.5mm dia., Straight (Blue Handle)	21.1001
Suture Retrieval Forceps	16.1018
Micro-Scissors, 2.75mm dia., Straight	2.10011

Original Spectrum Suture Hooks

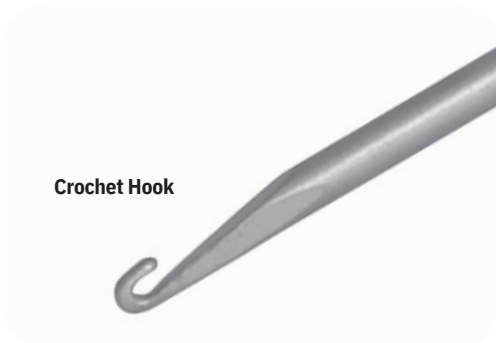
Suture Hook, Straight	97.10015
Suture Hook, 45° Left Curve	97.14115
Suture Hook, 45° Right Curve	97.14215
Suture Hook, 90° Left Curve.....	97.19115
Suture Hook, 90° Right Curve	97.19215
Suture Hook, Left Corkscrew	97.10115
Suture Hook, Right Corkscrew	97.10215
Crescent Suture Hook, Small Curve, 3 x 15mm	C8740
Crescent Suture Hook, Medium Curve, 4 x 20mm	C8741
Crescent Suture Hook, Large Curve, 6 x 25mm	C8742

Suture hooks and crescent suture hooks are limited reuse.

Spectrum Accessories

Suture Saver Kit (5 Kits per Box)C6180

Loop Handle Knot Pusher.....	C6112
Replacement Cannula, without Seals	C8746A
Replacement Trocar	C8746B
Replacement Obturator	C8746C
Shuttle Relay™ Suture Passer (10 per Box, Sterile)	C6004



TETRA Arthroscopy Shoulder Instrument Set The TETRA Arthroscopy Shoulder Instrument Set is a comprehensive set of manual instruments that can be used for arthroscopic or mini-open shoulder repairs. The set has been designed to allow flexibility in suture passing and suture retrieving methods that are critical to success in these procedures.

Suture Retriever

Cat. No.

- Straight, 3.5mm dia., 138mmGU1004
- 35° Up, 3.5mm dia., 138mmGU1008

Suture Snare™

- Straight, 3.5 dia., 138mmGU1003

Katana® High-Strength Suture Cutter

-GU1009

Suture Scissor

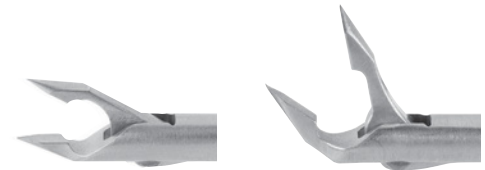
- Straight, 3.4 dia., 136mmGU1005

Tissue Grasper

- Straight, 3.5 dia., 142mmGU1002

Accessories

- Loop Handled Knot PusherC6112
- Switching Stick2220
- Instrument TrayMT1006



**Suture Retriever,
Straight**

**Suture Retriever,
35° Up**



**Suture Snare™
Straight**

**Katana® High-Strength
Suture Cutter**



Suture Scissor

Tissue Grasper



Instrument Tray



Shutt Suture Punch



Suture Punch System

Suture Punch System

- » Enables the surgeon to arthroscopically suture Bankart lesions, rotator cuff tears and incomplete ACL tears
- » Use with standard 2/0 to #1 monofilament suture, or in conjunction with the Shuttle Relay™ suture passer when braided suture is desired, with a slip resistant roller system
- » The arthroscopic suture passer or drill bit provides proper suture passage

Instruments	Cat. No.
Suture Punch, 4.0mm Needle, Straight	18.1007
Suture Punch, 4.0mm Needle, Straight, Slotted and Low Profile	18.1008
Suture Punch, 6.0mm Needle, Straight, Low Profile	18.100157

(Pass 2/0 to #2 Monofilament Suture)

Suture Punch, 7.0mm Needle, Straight	18.10012
Suture Punch, 7.0mm Needle, Straight, Low Profile	18.100123

	Accessories
Arthroscopic Suture Passer 3.0mm, Sharp	18.00015
Replacement Obturator (White Plastic)	A55-114-02
Switching Stick, .125" x 10" (2 per Box)	2220
Suture Drill Bit, 3.3mm	8757
Shuttle Relay Suture Passer (10 per Box, Sterile)	C6004



Manual Instruments Wide range of tips (forceps, aggressors, scissors, suture retrievers) available.
 Shutt® 210's are 210mm in length and 3.4mm in diameter permitting access to the deep hip joint.
 » Quality and durability is the Shutt assurance
 » Engineered hinge pin breaks before any failure that could lead to metal being left behind in the joint



Cat. No.

90° Rotary Forceps
 Blunt Tip LeftS210RFL
 Blunt Tip RightS210RFR

Aggressor Forceps
 15° UpS210AFU Left
S210AFL Right
S210AFR

Retrograde Forceps
 15° Up Right BiteS210RGF

Suture Retrieval Forceps
 StraightS210SRF

Micro-Scissors
 StraightS210MSC

Grasping Forceps
 Straight W/Ratchet S210GSP

S Suture Passer

» Low profile 1.8mm suture hook the Spectrum MVP suture passer effectively passes and retrieves suture while preserving labral tissue

	Cat. No.
Spectrum MVP, Medium Crecent Hook, Extended Length, Disposable, Packaged Sterile, 3 per Box	C6400EL
Spectrum MVP, 45° Right Hook, Extended Length, Disposable, Packaged Sterile, 3 per Box	C6410EL
Spectrum MVP, 45° Left Hook, Extended Length, Disposable, Packaged Sterile, 3 per Box	C6420EL

Raven™

Extended Length Raven Straight	GU1004EL
Extended Length Raven 35° Up	GU1008EL



Spectrum MVP, Medium Crecent Hook



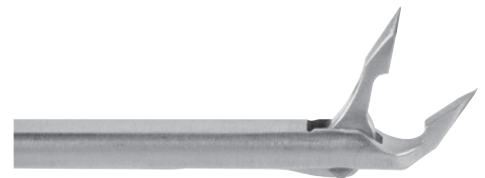
Spectrum MVP, 45° Right Hook



Spectrum MVP, 45° Left Hook



Extended Length Raven Straight



Extended Length Raven 35° Up

Manual Instruments keep getting better. TETRA has come a long way in setting the standards for arthroscopic instrumentation. As a result of TETRA being an early pioneer in the field, the first arthroscopic hook punch forceps was produced in 1980.

TETRA has earned a reputation for precise, dependable instruments. With an unsurpassed commitment to service, TETRA has met your needs time and time again. Our instruments feature a barber-tang handle for a sensitive touch and a large thumb ring for long-term comfort. A special coating on the actuator guarantees a smooth cutting action. Precision-matched, diamond-honed tips

assure
a clean, close cut.

Today and into the future, our engineers strive for improvements. The latest

TETRA

forceps and graspers feature a stronger tube and are laser welded at the shaft tip and base. A heavy duty shear pin stands up to the toughest tissue. A glass bead finish is easy to clean and gives each instrument a highly-professional look and feel.



forceps are available in a wide range of shaft configurations including straight, 15°, 30° and 45° right and left curves, as well as a 15° up curve.



Forceps



Small Joint Forceps



Blunt Tip Forceps



B-Scoop Forceps



Shovel Nose Forceps

Blunt Tip Forceps

3.4mm dia., 130mm

Cat. No.

Straight1.1001

15° Up1.1631

B-Scoop Forceps

3.4mm dia., 130mm

Straight1.1002 30°

Left1.1212 30° Right

.....1.1222 15° Up

.....1.1632

Mini-Tip Forceps

2.75mm dia., 130mm

Straight2.1003 30°

Left2.1113 30° Right

.....2.1123 15° Up

.....2.1633

3.4mm dia., 130mm 15° Up

.....1.1633

Shovel Nose Forceps

3.4mm dia., 130mm

Mini, Straight4.1003

90° Rotary Forceps

3.4mm dia., 130mm

	Cat. No.
Blunt Tip, Blunt, Right	41.10021
Blunt Tip, Blunt, Left	41.10022

3.4mm dia, 130mm Square

Blunt Tip, Blunt, Right	41.1001
Blunt Tip, Blunt, Left	41.1002

90° Forceps

3.4mm dia., 130mm

Blunt Tip, Right	31.1001
Blunt Tip, Left	31.1002

Series 210®

Blunt Tip, Left	S210RFL
Blunt Tip, Right	S210RFR

Low-Profile Forceps

2.75mm dia., 130mm

Straight	32.10019	15°
Up	32.16319	

Aggressor® Forceps

3.4mm dia., 130mm

Straight	31.10034	15°
Up	31.16334	15° Left
.....	31.16136	15° Right
.....	31.16235	

Series 210

15° Up	S210AFU	Left
.....	S210AFL	Right
.....	S210AFR	



90° Rotary Forceps



90° Forceps



Shutt Low-Profile Forceps



Aggressor® Forceps



Mini-Aggressor® Forceps

Mini-Aggressor® Forceps

2.75mm dia., 130mm

Cat. No.

Straight32.10034
15° Up32.16334

3.4mm dia., 130mm

Straight31.10033
15° Up31.16333

30° Left31.12133

30° Right31.12233



45° Forceps

45° Forceps

2.75mm dia., 130mm

Blunt Tip, Right32.10013

Blunt Tip, Left32.10014

Scoop Tip, Right32.10017

Scoop Tip, Left32.10018

3.4mm dia., 130mm

Blunt Tip, Right31.10013

Blunt Tip, Left31.10014



Retrograde Forceps

Retrograde Forceps

Straight, Left BiteC3007.0

Straight, Right BiteC3007.1 15°

Up, Right BiteC3007.2 15° Up,

Left BiteC3007.3

Square Trimmer (SST) Forceps

2.75mm dia., 130mm

Cat. No.

Blunt Tip, Straight	2.1039
Blunt Tip, 15° Up	2.1639
Scoop Tip, Straight	2.1004
3.4mm dia., 130mm	
Blunt Tip, Straight	1.1039
Blunt Tip, 15° Up	1.1639
Scoop Tip, Straight	1.1004



**Shutt® Square Trimmer (SST)
Blunt Tip, Straight Forceps**

Suture Retrieval Forceps

3.4mm dia., 130mm

Straight	16.1018
Series 210®	S210SRF



Shutt Straight Suture Retrieval Forceps

Standard Scissors

2.75mm dia., 130mm

Straight	2.10012
3.4mm dia., 130mm	
Straight	1.10012



Shutt Standard Scissors



Micro-Scissors

Micro-Scissors

2.75mm dia., 130mm

Cat. No.	
Straight	2.10011
30° Right	2.11211
15° Up	2.16311
3.4mm dia., 130mm	
Straight	1.10011
30° Left	1.12111
30° Right	1.12211
Series 210®	S210MSC



Alligator Grasper

Alligator Grasper

2.75mm dia., 130mm

Straight, w/Ratchet	12.1002
3.4mm dia., 130mm	
Straight, w/Ratchet	11.1002
4.5mm dia., 130mm	
Straight, w/Ratchet	18.1002



Grasping Forceps

Grasping Forceps

2.75mm dia., 130mm	Straight,	w/Ratchet	
.....	12.1001	3.4mm dia., 130mm	
Straight, w/Ratchet		11.1001	
Straight, w/o Ratchet		16.1001	
4.5mm dia., 130mm			
Straight, w/Ratchet		18.1001	
Series 210		S210GSP	

Custom Grasping Forceps

2.75mm dia., 130mm	Straight,	w/o Ratchet	
.....	17.1001	4.5mm dia., 130mm	
Straight, w/o Ratchet		19.1001	



90° Left Rotary Punch

Rotary Punch

3.3mm dia., 130mm

	Cat. No.
90° Left	C6850
90° Right	C6851



Straight Linear Wide Bite Punch

Linear Wide Bite Punch

3.3mm dia., 130mm

Straight	C6855
----------------	-------



15° Up Linear Wide Bite Punch

Linear Wide Bite Punch

3.3mm dia., 130mm

15° Up	C6856
--------------	-------



C6857 15° Upswept Linear Wide Bite Punch

Linear Wide Bite Punch

3.3mm dia., 130mm

15° Upswept	C6857
-------------------	-------

Linear Punch

3.3mm dia., 130mm

Cat. No.

1.3mm Tip, StraightC6858

Linear Punch

3.3mm dia., 130mm

Narrow, StraightC6806

Linear Punch

3.3mm dia., 130mm

15° UpC6859

Linear Punch, Scissor

3.3mm dia., 130mm

15° UpC6860



1.3mm Tip, Straight Linear Punch



Narrow, Straight Linear Punch



15° Up Linear Punch



15° Up Linear Punch, Scissor



1.3mm Tip, Straight Linear Punch



Narrow, Straight Linear Punch



15° Up Linear Punch



15° Up Linear Punch, Scissor

Linear Punch

3.3mm dia., 130mm

1.3mm Tip, StraightCat. No. C6858

Linear Punch

3.3mm dia., 130mm

Narrow, StraightC6806

Linear Punch

3.3mm dia., 130mm

15° UpC6859

Linear Punch, Scissor

3.3mm dia., 130mm

15° UpC6860

Linear Alligator Grasper

3.3mm dia., 130mm

2.7mm TipCat. No. C6861

Linear Wide Bite Punch

3.3mm dia., 130mm

15° Blunt NoseC6866

Linear Punch Scissor

3.3mm dia., 130mm

StraightC6809



Linear Alligator Grasper



Linear Wide Bite Punch



Straight Linear Punch Scissor



20° Left Rotary Scissors

Rotary Scissors

3.3mm dia., 130mm

	Cat. No.
20° Left	C6810
20° Right	C6811



Linear Grasper

Linear Grasper

3.3mm dia., 130mm

Large Body.....	C6812
-----------------	-------



Linear Wide Bite Punch

Linear Wide Bite Punch

3.3mm dia., 130mm

15° Up, left	C6804	15°
Up, right	C6805	



Linear Wide Bite Oblique Punch

Linear Wide Bite Oblique Punch

3.3mm dia., 130mm

25° Left	C6868	25°
Right	C6869	

Meniscal Lift Punch

1.7mm x 130mm

StraightCat. No. C6700



Meniscal Lift Punch

Retro Punch

2.4mm x 130mm

LeftC6701

RightC6702



Left Retro Punch



Right Retro Punch

Grasper, Cupped

3.4mm x 130mm

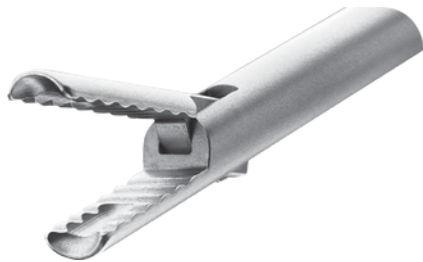
StraightC6703



Grasper, Cupped



Suture Tram® Retriever, Straight



Suture Tram®

3.3mm dia., 130mm

Cat. No.

Retriever, StraightC6800

Retriever, 15° UpsweptC6801

TETRA Arthroscopy Shoulder Instrument Set

The TETRA Arthroscopy Shoulder Instrument Set is a comprehensive set of manual instruments that can be used for arthroscopic or mini-open shoulder repairs. The set has been designed to allow flexibility in suture passing and suture retrieving methods that are critical to success in these procedures.

Raven Suture Retriever

	Cat. No.
Straight, 3.5mm dia., 138mm	GU1004
35° Up, 3.5mm dia., 138mm	GU1008

Suture Snare™

Straight, 3.5mm dia., 138mm	GU1003
-----------------------------------	--------

Suture Scissor

Straight, 3.4mm dia., 136mm	GU1005
-----------------------------------	--------

Tissue Grasper

Straight, 3.5mm dia., 142mm	GU1002
-----------------------------------	--------

Accessories

Ring Handled Knot Pusher	C6112
Switching Stick	2220
Instrument Tray	MT1006



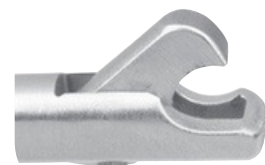
Straight Raven™ Suture Retriever



35° Up Raven Suture Retriever



Suture Snare™



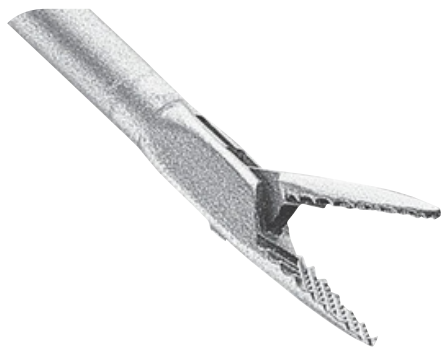
Suture Scissor



Tissue Grasper



Standard Graspers Straight



Mosquito Tip Graspers



SST Blunt Tip Forceps



SST Scoop Tip Forceps

Standard Graspers

2mm dia., 65mm

Cat. No.

Straight15.6001

2.75mm dia., 65mm

Straight17.6001

2mm dia., 90mm

Straight15.7001

2.75mm dia., 90mm

Straight17.7001

Mosquito Tip Graspers

2mm dia., 65mm

Straight15.6004

2.75mm dia., 65mm

Straight17.6004

2.75mm dia., 90mm

Straight17.7004

SST Blunt Tip Forceps

2mm dia., 65mm

Straight5.6009 15°

Down5.60013 15° Up

.....5.60014

2.75mm dia., 65mm

Straight2.6009 15°

Down2.60013

2mm dia., 90mm Straight

.....5.7009 2.75mm

dia., 90mm Straight

.....2.7009

SST Scoop Tip Forceps

2mm dia., 65mm

Straight5.6004 15°

Up5.60016

2.75mm dia., 65mm 15° Down

.....2.60015 2mm dia.,

90mm Straight

.....5.7004 2.75mm

dia., 90mm

Straight2.7004 15°

Down2.70015

45° Forceps

	Cat. No.
2mm dia., 65mm	
Blunt Tip, Right	35.60013
Blunt Tip, Left	35.60014
Scoop Tip, Right	35.60017
2.75mm dia., 65mm	
Blunt Tip, Right	32.60013
Blunt Tip, Left	32.60014
2mm dia., 90mm	
Blunt Tip, Right	35.70013
Blunt Tip, Left	35.70014

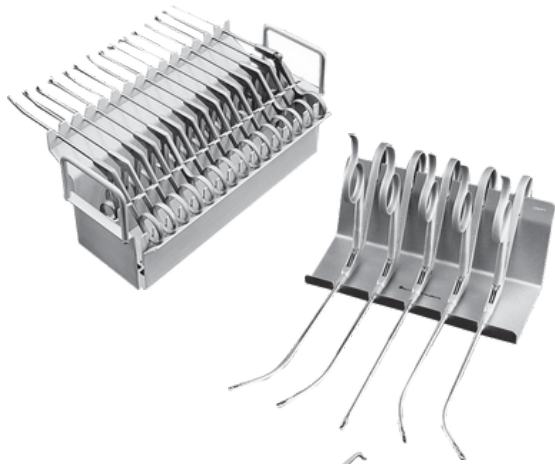
Suggested Instruments For Master Small Joint Set*

(Includes Basic Small Joint Set and the following additions)

2.75mm dia., 65mm	
SST Blunt Tip Forceps, 15° Down	2.60013
2.75mm dia., 90mm SST Scoop Tip Forceps, Straight	2.7004
2.4mm dia., 65mm	
Banana Blade Knife (4 per Box, Sterile)	9973
Retrograde Blade Knife (4 per Box, Sterile)	9974



45° Forceps Blunt Tip,



Deluxe Forceps Stand

Deluxe Forceps Stand (Accommodates 15 ring-handled Shutt® and Concept® Instruments) Dimensions: 11.75"w x 5"h x 5.25"d9898 Cat. No.

Precision Probes

Shutt® probes are designed specifically for arthroscopic surgery. Unique handles give a firm grip and aid in instrument control. Shafts are hardened to resist breakage and tapered for better visualization. All straight probes have etched graduations in 5mm increments. All probes are limited-reuse and may be disinfected, steam autoclaved or ethylene oxide sterilized.

Probes available separately

	Cat. No.
4.0mm dia. Tip, Maxi-Probe, Straight, Green Handle	21.1002
3.5mm dia. Tip, Mini-Probe, Straight, Blue Handle	21.1001

Small Joint Probe

- » Designed for 360° rotation in joint.
- » Lightweight for fingertip control.
- » Indexed handle for proper orientation.
- » Angled tip for ease of insertion.

65mm Small Joint Probe, 70° Tip	26.3003
90mm Small Joint Probe, 70° Tip	26.7003
90mm Small Joint Probe, 30° Tip	26.7103
Instrument Stabilizer Ball	326.000

Small Joint Curette/Dissector

- » Uniquely designed for a wide range of applications.
- » Atraumatic dissector tip useful to test ligament integrity and for lysis of adhesions.
- » Angle-faced curette tip is tapered for ease of insertion and protection of articular surfaces.
- » Handle indexed on each end for proper orientation with joint.

2.75mm dia., 65mm	
Curette/Dissector	26.3006
Open Curette	22.6005
Dissector	22.6008
2.75mm dia., 90mm	
Open Curette	22.7005
Cupped Curette	26.7006
Dissector	22.7008

Instrument Stabilizer Ball

65mm Small Joint Probe, 70° Tip

Dissector

Open Curette



ARTHROSCOPY POWER PRODUCTS

ARTHROSCOPY POWER PRODUCTS

Website: www.tetrind.com

Email: info@tetraind.com

WhatsApp: +92 329 7598399

Address: Shahab pura 51310 Sialkot Pakistan